

MED DIMENSIONS

CANINE INTUBATION W/ NG

MD-E-C1041S



User Manual

Intended Use

1. Use our intubation trainer to practice inserting an intubation tube or laryngoscope.

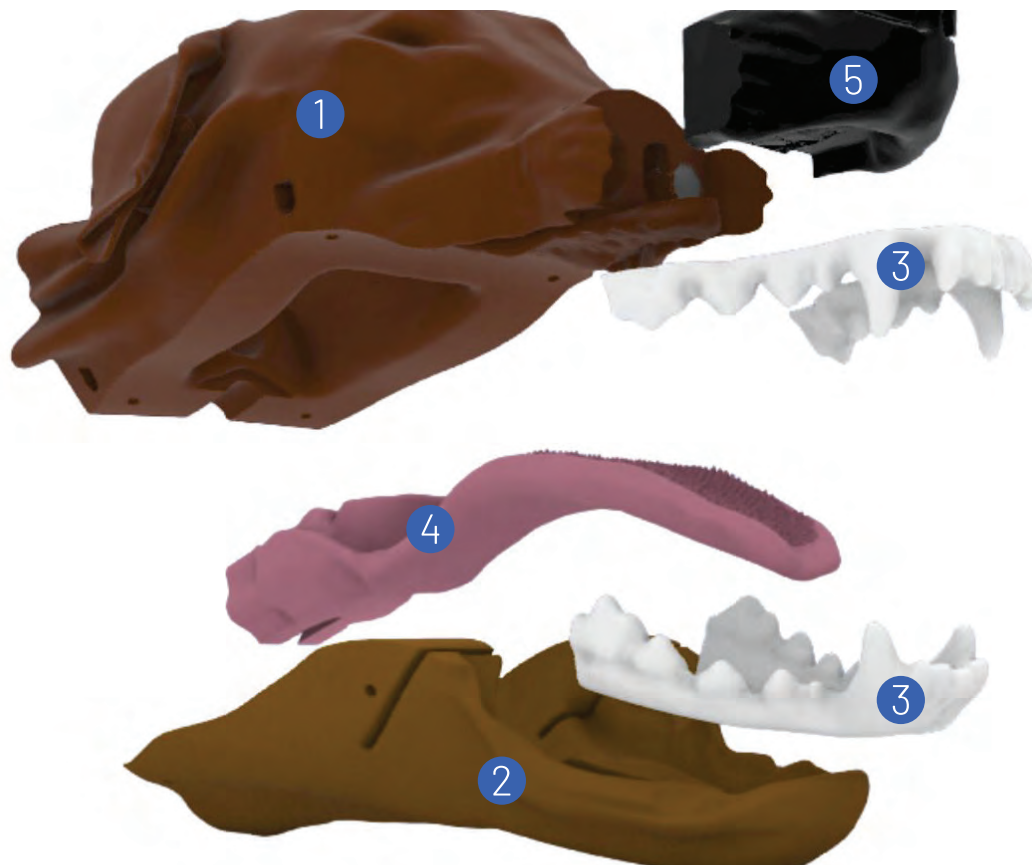
- Near unlimited use

1. Parts Included

1. Head
2. Jaw
3. Top and bottom teeth
4. Tongue with epiglottis and pharynx
5. Nose
6. Suction cup mount

2. Tools Recommended

1. Size 10 endotracheal tube
2. Laryngoscope
3. Size 8 Fr NG tube
4. Monofilament suture
5. Lubricant



3. Assembly Instructions

1. **Suction Cup Mount:** Twist the mount into the brass fitting at the back of the head.
Note: The brass fitting will fit most camera tripods with a head plate screw.
2. **Replace Nose:** Gently push up from the bottom of the nose, then slide the replacement in place from the top, allowing the magnet to align the nose on the head.
3. **Replace Jaw and Tongue:** Trim all four cable-ties and remove the jaw. Align the holes of the replacement jaw with the holes of the head. Feed the cable-ties face down through jaw, into the head. Cinch the cable-ties until taught. Trim the cable-tie tails and rotate to seat the head of the cable-ties into the cutouts of the model.
4. Lubricate as you would in a normal setting. Flush with water to remove lubricant as needed.



Best Practices

To keep your models in best working order we recommend the following:

1. Store your model in a cool, dark, and low dust location.
2. For models containing or exposed to water, wipe down excess, leave all connectors open, and allow the components to dry completely before storing.
3. If applicable, apply Silicone Finishing Powder to reduce tack and dust accumulation.
4. If applicable, flush or wash models with water to remove lubricant and debris.
5. Work on a flat surface to prevent the model from slipping.

Replacement Components

Component	SKU	Material	Size	Weight
Replacement Nose Puck	MD-E-C1041S-1	Silicone	2.0x2.5x1.5 in	0.2 lbs
Replacement Jaw/Tongue	MD-E-C1021S-1	Plastic, Silicone	5.0x2.0x9.0 in	0.5 lbs

Warranty Information

This is a summary of the Med Dimensions warranty policy provided for your convenience. For the complete and most up-to-date warranty information, please refer to the full policy available at <https://www.med-dimensions.com/warranty/>.

Med Dimensions warrants its products to be free from defects in design, operation, workmanship, and materials. Warranty duration varies by type of product as described on our warranty page. This warranty does not cover damage resulting from misuse, abuse, neglect, or unauthorized repair. To initiate a warranty claim, contact Med Dimensions Customer Support at support@med-dimensions.com or [585-510-0005](tel:585-510-0005) x1. Proof of purchase is required for warranty service. This warranty supersedes all other warranties, whether expressed or implied, including warranties of merchantability or fitness for a particular purpose. Med Dimensions is not liable for consequential or incidental damages arising from product use or inability to use.