

---

# MED DIMENSIONS

## SURGICAL GUIDES & PHANTOMS



Med Dimensions, LLC. || 318 Timothy Lane, Suite 2 || Ontario, NY 14519

December 2023 Edition

---



## Overview

Founded in 2019, Med Dimensions believes that educating the next generation of veterinarians, and providing support to practicing veterinarians are crucial to the overall health of our pets and animals.

Med Dimensions takes real anatomy and pathology and transforms it into three dimensional solutions for any type of procedure and any specialty. From angular limb deformities to medical phantoms, and anything in between, we have a solution for you.

## Goals

When surgeons and residents use a Med Dimensions phantom or surgical guide they will:

- 1.Reduce uncertainties in medical procedures
- 2.Have an increased confidence in their abilities to perform techniques and procedures
- 3.Experience realistic and immersive training that closely mimics real-life situations



# SURGICAL GUIDES & PHANTOMS

## MED DIMENSIONS

### SURGICAL GUIDES

Med Dimensions starts by collaborating with your surgeon, using your medical scans to develop a surgical plan. Next, we supply 3D printed bones and an extra set of surgical guides to preform a rehearsal procedure. Surgical Guides allow for a precise and accurate intraoperative work flow.

### AI TECHNOLOGY

We're constantly growing our cutting-edge AI engineering programs. Our automated segmentation tools have significantly accelerated the phantom creation process, ensuring faster delivery to the point of care. Plus, our surgical planning automation offers clinicians more valuable insights.

### SURGICAL PHANTOMS

Having the actual and accurate anatomy right in front of you enhances the understanding and planning of veterinary care. Med Dimensions can take your DICOMs and generate 3D replicas tailored to your specific case.



More Info  
[www.med-dimensions.com](http://www.med-dimensions.com)

Call Us  
**+1.585.510.0005**



# PROCESS

## STEP 1: FILL OUT CASE REQUEST

This form must be filled out by a surgeon or resident. This information provides details needed to create accurate tools

<https://www.med-dimensions.com/case-request/>

<b>Patient Name *</b>	<b>Species *</b>
<input type="text"/>	<input type="text" value="Canine"/>
<b>Sex</b>	<b>Weight *</b>
<input type="text" value="Female"/>	<input type="text" value="Please specify pounds or kilos"/>
<b>Age</b>	<b>Breed</b>
<input type="text" value="Please specify months or years"/>	<input type="text"/>
<b>Brief Clinical History *</b>	
<input type="text" value="Please indicate relevant health information for the case"/>	
<b>Region of Pathology *</b>	<b>Anatomy to Print *</b>
<input type="text" value="Left/Right bone, joint, etc"/>	<input type="text" value="Quarter, limb, or specific bone(s)"/>
<b>Desired Tool *</b>	<b>Quantity of Models *</b>
<input type="text" value="Printed Model Only"/>	<input type="text" value="1"/>

## STEP 2: Upload A CT Scan



Med Dimensions will reach out with a link to an upload portal for your medical image, or accept your image via your preferred method.

If the surgery only requires models - this is the last step! The models will be printed and shipped to your destination in 2-5 days. Med Dimensions will overnight ship emergency cases for an additional fee.

# SURGICAL PROCESS

## STEP 3: Surgical Plan

Our team of veterinarians and engineers will present a surgical plan to the surgeon. We encourage the surgeon to be as involved as they desire



## STEP 4: Surgical Rehearsal



Surgical guide cases come with two models:

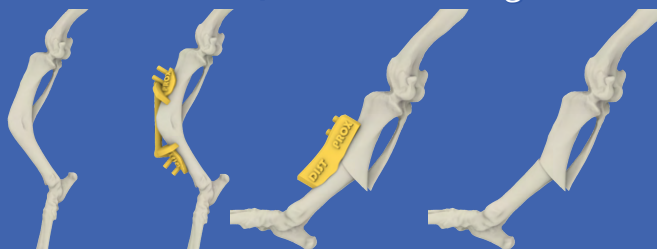
1 pre-op model and 1 post-op model.

We recommend that all surgeons, especially new graduates or surgeons new to 3D printing, try the case on a bone model to ensure the process goes smoothly.

## STEP 5: The Surgery

Surgical guides can be autoclaved. They are printed from a biocompatible resin specifically made for surgical tools.

The models cannot be autoclaved, but can be gas sterilized.



# SURGICAL PRICING

## MED DIMENSIONS

### BASELINE PRICING:

Flat conversion fee of \$200 per DICOM

Variable model price dependent on animal size (see chart below)

Body region	Extra-Small (>15lbs) (>7kg)	Small (15- 30lbs)(7-14 kg)	Medium (30- 65lbs)(14- 30kg)	Large (65- 100lbs) (30kg-45kg)	Extra-Large (<100lbs) (<45kg)
Individual limb bone (femur, tibia/fibula, humerus, radius/ulna)	\$25	\$50	\$100	\$125	\$150
Bone Set (femur/tibia/fibula, humerus/radius/ulna)	\$50	\$100	\$160	\$200	\$300
Spine	\$45	\$90	\$155	\$200	\$245
Pelvis	\$25	\$50	\$100	\$125	\$150
Skull	\$50	\$100	\$150	\$200	\$250
Mandible	\$30	\$55	\$80	\$105	\$130
Maxilla	\$35	\$60	\$85	\$110	\$135
Custom (Multi-color prints, autoclavable model, etc)	\$15-150	\$30-250	\$60-300	\$75-400	\$90-500

### OPTIONAL SURGICAL GUIDE KITS:

ALD Guide Kit is \$400-500. Includes 1 PostOp Bone, 2 copies of cutting guide, and 2 copies of repositioning guide

Spinal Guide Kit is \$500-700. Includes 2 copies of individual guides per vertebrae involved

*Med Dimensions is excited to work with you on your surgical needs. If you do not see your specific procedure please contact us and we will work with you to create a custom model for your case.*

Sales tax and shipping is not included in the pricing model provided by Med Dimensions



More Info  
[www.med-dimensions.com](http://www.med-dimensions.com)

Call Us  
**+1.585.510.0005**

